



Nautical Series

BSC10

L70
25°C

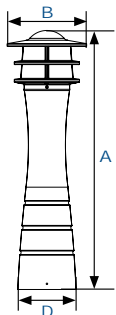
106,000 Hours

Nautical Series Lighthouse Bollard



BSC10 with
Opal LumaLens

BSC10 with Clear Lens
and White Cone Reflector



Dimensions

Diameter 1 (B)	11" (278mm)
Diameter 2 (D)	8 1/2" (206mm)
Height (A)	36" (915mm)

The Nautical Series Lighthouse Bollard is a durable and stylish lighting solution for any outdoor space. It features a sturdy aluminum base with a powder-coated finish, a clear polycarbonate lens, and a LED light source that mimics the look of a traditional lighthouse. The Nautical Series Lighthouse Bollard is ideal for pathways, gardens, marinas, and coastal areas. It is easy to install, weather-resistant, and energy-efficient. The Nautical Series Lighthouse Bollard will add a touch of maritime charm to your landscape design.

Specifications and Features:

Housing:

Cast Aluminum Housing with Flush Mounting Base & Vandal-Resistant Screws, Internal Driver Tray for Easy Maintenance.

Listing & Ratings:

CSA: Listed for Wet Locations, ANSI/UL 1598, 8750
IP66 Sealed LED Compartment.

Finish:

Textured Architectural Bronze or Black Powdercoat Finish Over a Chromate Conversion Coating. Custom Colors Available Upon Request.

Reflector:

Reflective White UV-Stabilized Polycarbonate Cone Reflector

Lens:

Clear UV-Stabilized Polycarbonate or SoftLED LumaLens Opal UV-Stabilized Polycarbonate Vandal-Resistant Lens.

Mounting Options:

Mounting Kit with 8" Zinc-Plated Anchor Bolts, Included.

EasyLED LED:

Aluminum Boards

Wattage:

Array: 10w, System: 10.2w (up to 35w HID equivalent)
Array: 19w, System: 20.4w (up to 50w HID equivalent)
Array: 28w, System: 30.6w (up to 70w HID equivalent)

Driver:

Electronic Driver, 120-277V, 50/60Hz or 347V, 50/60Hz; Less Than 20% THD and PF>0.90. Standard Internal Surge Protection 2kV. 0-10V Dimming Standard for a Dimming Range of 100% to 10%; Dimming Source Current is 150 Microamps.

Controls:

Fixtures Ordered are Internally Wired for Switching and/or 1-10V Dimming Within the Housing. Remote Direct Wired Interface of 1-10V Dimming is Not Implied and May Not Be Available. Please Consult Factory. Fixtures are Tested with QSSI Controls and May Not Function Properly With Controls Supplied By Others. Fixtures are NOT Designed for Use with Line Voltage Dimmers.

Warranty:

5-Year Warranty for -20°C to +40°C Environment.

See Page 3 for Projected Lumen Maintenance Table.

Project Information:

Project Name:	Fixture Type:
Complete Catalog #:	Date:
Comments:	

Certification & Listings:



Nautical Series Lighthouse Bollard

Order Information Example: **BSC10F19U4KCBSF**

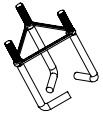
Model	Optic	Wattage	Driver	CCT	Lens	Color	Options
BSC10 EasyLED Lighthouse Bollard	F=Wide Beam Spread	10=10w 19=19w 28=28w	U=120-277V C=347V* *19w Model Only	3K=3000K 4K=4000K 5K=5000K	C=Clear UV-Stabilized Polycarbonate Vandal-Resistant Lens L=SoftLED LumaLens Opal UV-Stabilized Polycarbonate Vandal-Resistant Lens	B=Black C=Custom (Consult Factory)	SF=Single Fuse* DF=Double Fuse* SP=Surge Protection BU=Battery Backup, 90 Minutes* BUC=Cold Start Battery Backup, -20°C, 90 Minutes* *120-277V Models Only.

Accessories & Replacement Parts:

Mounting Accessories (Order Separately, Field Installed)

BOLAN4	Mounting Kit, Includes Bracket & Three (3) 4" Zinc-Plated Anchor Bolts
BOLAN8	Mounting Kit, Includes Bracket & Three (3) 8" Zinc-Plated Anchor Bolts
BOLAN12	Mounting Kit, Includes Bracket & Three (3) 12" Zinc-Plated Anchor Bolts
BOLAN15	Mounting Kit, Includes Bracket & Three (3) 15" Zinc-Plated Anchor Bolts
BREBASE*	Bollard Retrofit Base Kit Adapts New Bollards to Most Existing Bolt Patterns. Fits all LEPG Bollards. Die Cast with Powdercoat Finish, Hardware Included. 1 1/2" Dia. x 1 1/2" H

*Specify Color: Z=Bronze, B=Black, C=Custom (Consult Factory)



BOLAN



BREBASE*

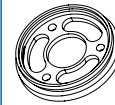
*Shown Mounted

Replacement Parts (Order Separately, Field Installed)

BORBASE* Die Cast Base Plate with Powdercoat Finish Over a Chromate Conversion Coating.

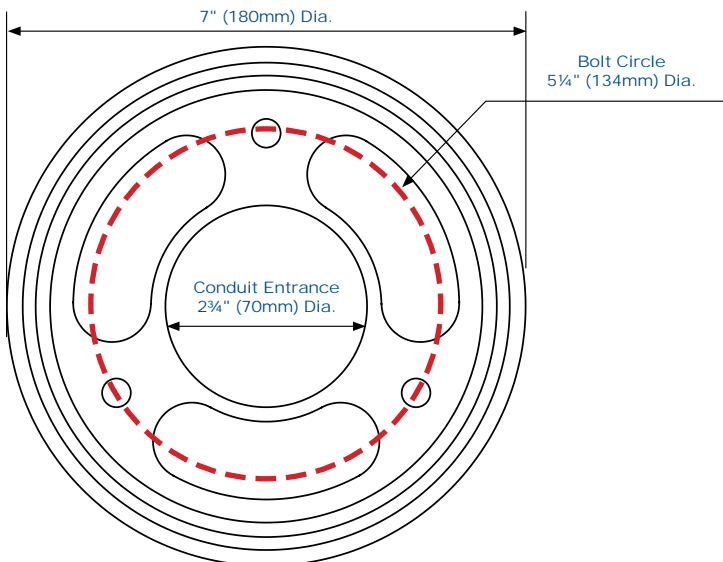
*Specify Color: Z=Bronze, B=Black, C=Custom (Consult Factory)

For Replacement Battery Backup, see the LEPG LED Battery Backup Specification Sheet.



BORBASE

BORBASE Dimensions





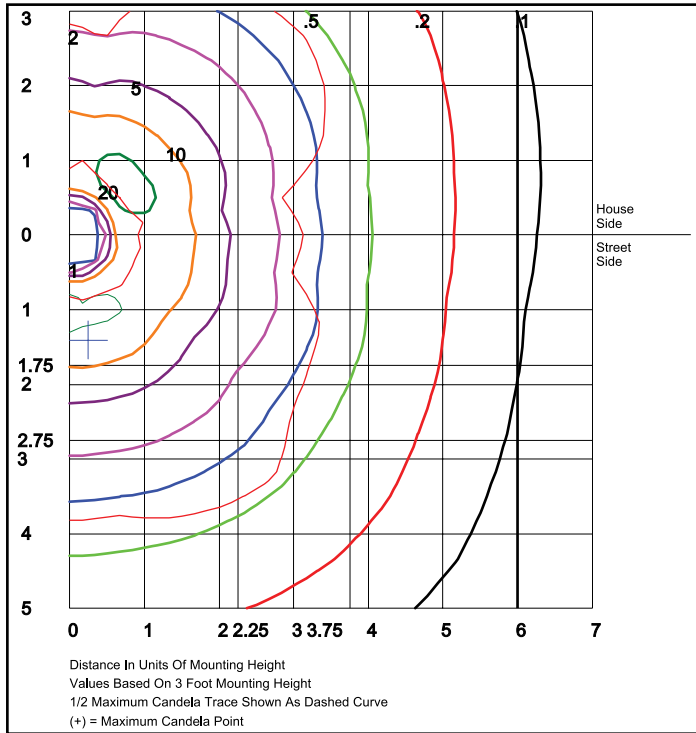
BSC10

L70
25°C

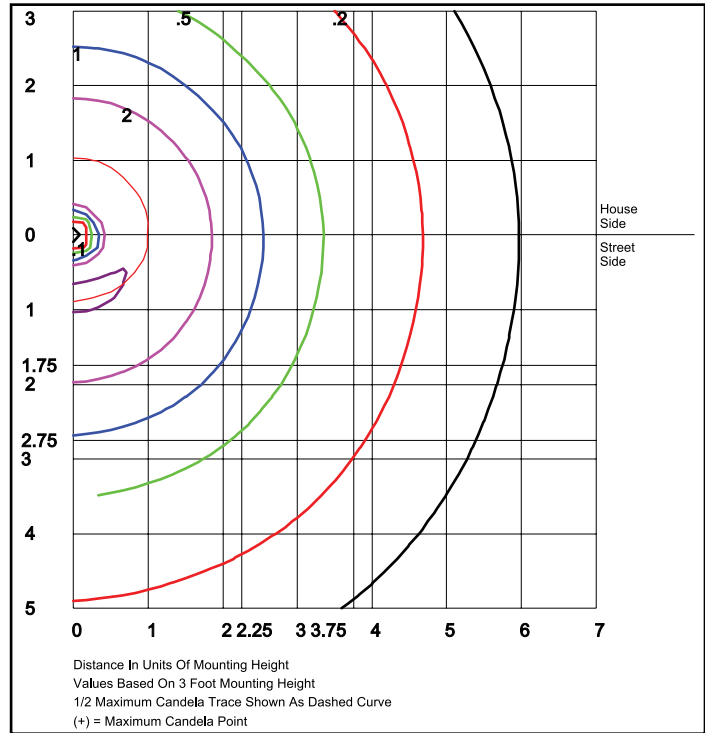
106,000 Hours

**Nautical Series Lighthouse
Bollard**

Photometric Data



BSC10F28U5KC
Type V, Clear Lens
Grid in feet, Mounting Height = 3 ft.



BSC10F28U5KL
Type V, LumaLens
Grid in feet, Mounting Height = 3 ft.

Photometric Performance

Optic	CCT	Wattage (Catalog Logic)		
		10W (1X10)	19W (1X19)	28W (1X28)
		10.2W	20.4W	30.6W
		Delivered Lumens		
B10 with Clear Polycarbonate Lens F=Type V Optic	3000K	855	1,710	2,566
	4000K	883	1,765	2,648
	5000K	917	1,834	2,751
	BUG Rating	B1-U3-G1	B1-U3-G1	B2-U3-G2
B10 with LumaLens F=Type V Optic	3000K	473	945	1,418
	4000K	488	976	1,463
	5000K	507	1,014	1,520
	BUG Rating	B0-U3-G1	B1-U3-G1	B1-U3-G2

Projected Lumen Maintenance

Data shown for 5000 CCT		Compare to MH				
TM-21-11	Input Watts	Initial	25,000 Hrs	50,000 Hrs	100,000 Hrs	Calculated LED Life
L70 Lumen Maintenance @ 25°C / 77°F	All wattages up to and including 31w	1.00	0.93	0.86	0.72	106,000
L70 Lumen Maintenance @ 50°C / 122°F		1.00	0.91	0.83	0.66	88,000
L80 Lumen Maintenance @ 40°C / 104°F		1.00	0.92	0.84	0.67	61,000

NOTES:
 1. Projected per IESNA TM-21-11. Data references the extrapolated performance projections for the base model in a 25°C ambient, based on 10,000 hours of LED testing per IESNA LM-80-08.
 2. Compare to MH box indicates suggested Light Loss Factor (LLF) to be used when comparing to Metal Halide (MH) systems.

Specifications subject to change without notice.