

K45

L70
25°C

290,000 Hours

EasyLED Large Bentley Kitty Hawk Area, Wall, and Flood Light



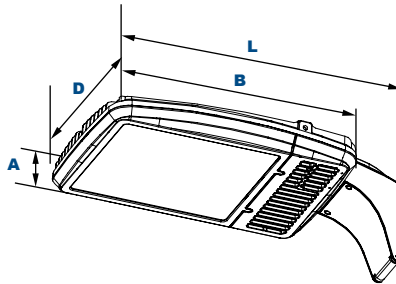
Shown with Kitty Hawk Arm Option on a Pole.



Shown with "WM" Wall Mount Bracket Option.



Shown with "SF" Slipfitter Mounting Option.



Dimensions

Width (D)	15 1/4" (400mm)	
Length (B)	22" (559mm)	Length with Mount (L)
Height (A)	4" (102mm)	

Kitty Hawk Arm (KA): 27 1/2" (699mm)
Slipfitter (SF): 29 1/4" (743mm)
Mounting Arm Adaptor (MA): 26 1/8" (664mm)
Yoke (Y): 26 1/4" (667mm)
Bracket (BR): 25 3/4" (654mm)

The Jemm K45 luminaire is available in two wattages with a wide choice of mounting configurations and optical distributions designed to replace HID lighting systems from 250w to 1000w MH or HPS. Typical applications include general area, parking, flood, security, and accent lighting for retail centers, industrial parks, schools and universities, public transit and airports, office buildings and medical facilities. Mounting heights of 16 to 35 feet can be used based on light level and uniformity requirements.

Specifications and Features:

Housing:

Die Cast Aluminum Housing and Front Frame, Integral Heat Sinking and Driver Compartment. Photocell Adaptable. Nickel-Plated Stainless Steel Hardware.

Listing & Ratings:

CSA: Listed for Wet Locations, ANSI/UL 1598, 8750; IP66 Sealed LED Compartment.

Finish:

Textured Architectural Bronze Powdercoat Finish Over a Chromate Conversion Coating. Custom Colors Available Upon Request.

Lens:

Tempered Clear Flat or SoftLED Flat Glass, or Tempered Clear Flat Prismatic Glass Lens.

Mounting Options:

Mounts with Kitty Hawk Arm, Adjustable Slipfitter, 2 1/2" Diameter Mounting Arm Adapter, Yoke, Two-Piece Bracket or Wall Mount Bracket. (Factory Installed)

EasyLED LED:

Aluminum Boards

Wattage:

167w: Array: 167.3w, System: 177w; (250-400w HID Equivalent)
256w: Array: 255.7w, System: 281w; (400-1000w HID Equivalent)

Driver:

Electronic Driver, 120-277V, 50/60Hz or 347-480V, 50/60Hz; Less Than 20% THD and PF>0.90. Standard Internal Surge Protection 6kV. 0-10V Dimming Standard for a Dimming Range of 100% to 10%; Dimming Source Current is 150 Microamps.

Controls:

Fixtures Ordered with Factory-Installed Photocell or Motion Sensor Controls are Internally Wired for Switching and/or 1-10V Dimming Within the Housing. Remote Direct Wired Interface of 1-10V Dimming is Not Implied and May Not Be Available, Please Consult Factory. Fixtures are Tested with Jemm Controls and May Not Function Properly With Controls Supplied By Others. Fixtures are NOT Designed for Use with Line Voltage Dimmers.

Warranty:

5-Year Warranty for -40°C to +50°C Environment.

See Page 4 for Projected Lumen Maintenance Table.

Order Information Example:

K45F256U5KCZKASP

K45								
Model	Optics/Beam	Wattage	Driver	CCT	Lens	Color	Mounting	Options
K45=Large Bentley Kitty Hawk Area, Wall, and Flood Light	A=Type I/NEMA 7H x 5V B=Type II/NEMA 7H x 7V C=Type III/NEMA 7H x 7V D=Type IV/NEMA 7H x 6V F=Type V/NEMA 7H x 7V I=Narrow Beam/NEMA 4H x 4V* *Use with 5K Model Only. See Page 3 & 4 for Distribution Information.	167=167w 256=256w	U=120-277V H=347-480V	3K=3000K* 4K=4000K 5K=5000K *Only for C & F Optics.	C=Standard Clear Flat Glass Lens S=SoftLED Flat Glass Lens P=Clear Flat Prismatic Glass Lens*	Z=Bronze C=Custom (Consult Factory)	KA=Kitty Hawk Arm SF= Slipfitter MA= Mounting Arm Adapter Y=Yoke BR=Two-Piece Swivel Bracket WM=Wall Mount Bracket NM=No Mount	SF=Single Fuse DF=Double Fuse SP=Surge Protection M1=Motion Sensor, IR for mounting heights of 20ft to 35ft M2=Motion Sensor, IR for mounting heights of 18ft or less R3=3-Pin Twist Lock Photocell Receptacle R5=5-Pin Twist Lock Photocell Receptacle R7=7-Pin ANSI C136.41—2013 Twist Lock Photocell Receptacle S23=Internal Microwave Sensor with dimming for mounting heights of 35' or less (120-277V Only)

Project Information:

Project Name: _____ Fixture Type: _____

Complete Catalog #: _____ Date: _____

Comments: _____

Certification & Listings:



DesignLights Consortium™
Qualified Luminaires:
KH45QA1X[167 256][U H]5KC***
KH45QB1X[167 256][U H]5KC***
KH45QC1X[167 256][U H]5KC***
KH45QD1X[167 256][U H]5KC***
KH45QF1X[167 256][U H]5KC***



EasyLED Large Bentley Kitty Hawk Area, Wall, and Flood Light

Mounting Options:



K45 with Kitty Hawk Arm (KA)

Kitty Hawk Die-Cast Mounting Arm, Bronze Powdercoat Finish, Includes Hardware. Mounts Directly to Square Poles.



K45 with Pole Mounting Arm Adaptor (MA) Die-

Cast Adaptor for 2 1/2" Horizontal Mounting Arms, Bronze Powdercoat Finish, Includes Hardware.



K45 with Yoke (Y)

Stamped Heavy-Duty Steel Yoke, Bronze Powdercoat Finish, Includes Hardware.



K45 with "SF" External Mount Slipfitter (SF)

External Mount Die-Cast Adjustable Slipfitter for 2 1/2" Tenons, Bronze Powdercoat Finish, Includes Hardware.



K45 with Two-Piece Swivel Bracket (BR)

Two-Piece Stamped Steel Adjustable Bracket, Bronze Powdercoat Finish, Includes Hardware.





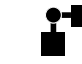
K45 with Wall Mount (WM)



Wall Bracket, Heavy-Duty Stamped Steel, Bronze Powdercoat Finish, Includes Hardware.


EPA (Effective Projected Area)

Shown with Large Kitty Hawk Arm mounting.

Configuration	EPA (Sq. Ft.)	Weight (Lbs.)
 1	1.00	33 Lbs

Configuration	EPA (Sq. Ft.)	Weight (Lbs.)
 2@180° Mount	2.00	66 Lbs
 2@90° Mount	1.36	66 Lbs

Configuration	EPA (Sq. Ft.)	Weight (Lbs.)
 3@90° Mount	2.20	99 Lbs
 3@120° Mount	2.00	99 Lbs

Configuration	EPA (Sq. Ft.)	Weight (Lbs.)
 4@90° Mount	2.20	132 Lbs

Accessories & Replacement Parts:



Mounting Accessories (Order Separately, Field Installed)	
KH40RPZ	Die-Cast Adaptor for 4" to 6" Round Poles, Bronze Powdercoat Finish. Use with KH45A Kitty Hawk Mounting Arm only.
KH40WMZ	Die-Cast Wall Mount Adaptor, Bronze Powdercoat Finish. Use with KH45A Kitty Hawk Mounting Arm only.
PTSB1SZ	Single Pole Tenon Spoke Bracket, 2 1/2" Horizontal Mounting Arm, Bronze Powdercoat Finish, Includes Hardware.
PTSB290SZ	Twin Pole Tenon Spoke Bracket, 2 1/2" Horizontal 90° Mounting Arms, Bronze Powdercoat Finish, Includes Hardware.
PTSB2180SZ	Twin Pole Tenon Spoke Bracket, 2 1/2" Horizontal 180° Mounting Arms, Bronze Powdercoat Finish, Includes Hardware.
PTSB390SZ*	Triple Pole Tenon Spoke Bracket, 2 1/2" Horizontal 90° Mounting Arms, Bronze Powdercoat Finish, Includes Hardware.
PTSB3120SZ*	Triple Pole Tenon Spoke Bracket, 2 1/2" Horizontal 120° Mounting Arms, Bronze Powdercoat Finish, Includes Hardware.
PTSB490SZ*	Quad Pole Tenon Spoke Bracket, 2 1/2" Horizontal 90° Mounting Arms, Bronze Powdercoat Finish, Includes Hardware.

*Non-stock item. Consult factory for lead time.

Accessories (Order Separately, Field Installed)	
P18131	Twist Lock Non-Shorting (Open) Cap Disconnects Service to Fixture for Temporary or Permanent Disabling (Fixture Always Off). IP65, 480V Maximum.
P18132	Twist Lock Shorting Cap Provides Fixed Service to Fixture (Fixture Always on). IP65, Rated Load 7200w Tungsten.
P18140	110-120VAC Instant Twist Lock Photocell
P18142	105-287VAC Instant Twist Lock Photocell
P18150	120VAC Time Delay Twist Lock Photocell
P18152	277VAC Time Delay Twist Lock Photocell
P18156	120-277VAC Universal Twist Lock Photocell
P18157	480VAC Time Delay Twist Lock Photocell. For 480V use only.
ACCHSG1Z	Die Cast Accessory Housing for Installing Sensors or Other Lighting Controls, Bronze Powdercoat Finish
KH45GSZ	Aluminum Glare/House Side Shield, Bronze Powdercoat Finish, Includes Hardware.
KH45WG	Wire Guard, Stainless Steel Construction, Includes Hardware.
ACCHSG3	Bronze Polycarbonate Housing for Installing Sensors, Includes Sensor Bracket and Gasket.

Replacement Parts (Order Separately, Field Installed)	
KH45GL	Tempered Clear Flat Glass Lens.
KH45GLSS	SoftLED Flat Glass Lens
KH45GLP	Tempered Prismatic Flat Glass Lens.
KH45AZ	Kitty Hawk Mounting Arm, Mounts Directly to Square Poles, Bronze Powdercoat Finish
FL73SFZX	External Mount Slipfitter, Die Cast, Bronze Powdercoat Finish
ALMAAZ	Pole Mounting Arm Adaptor, Fits 2 1/2" Arm, Includes Hardware, Bronze Powdercoat Finish
KH45YZ	Yoke, Stamped Heavy-Duty Steel, Bronze Powdercoat Finish
FL73BRZ	Two-Piece Swivel Bracket, Stamped Steel, Bronze Powdercoat Finish
WBR2Z	Wall Bracket, Heavy-Duty Stamped Steel, Bronze Powdercoat Finish, Includes Hardware.
P17117	Internal Microwave Sensor with Dimming, 120-277VAC, 50/60Hz. See P17117 Specification Page for Details.



K45

L70
25°C

290,000 Hours

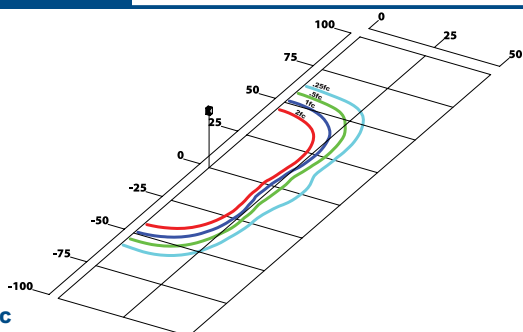
EasyLED Large Bentley Kitty Hawk Area, Wall, and Flood Light

Photometric Data

K45A256U5KC

Type I

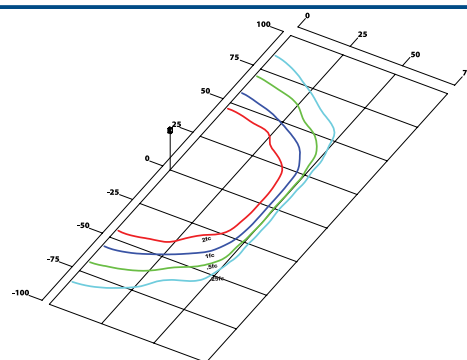
Grid in MH
MH=25 Feet



K45C256U5KC

Type III

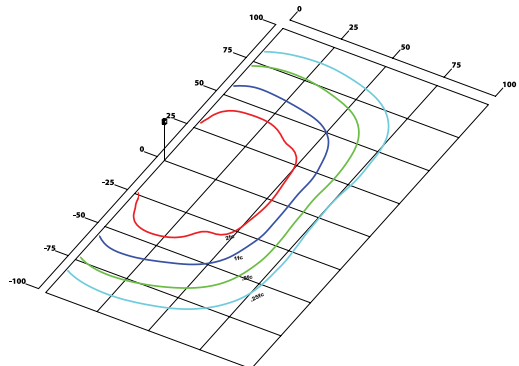
Grid in MH
MH=25 Feet



K45D256U5KC

Type IV

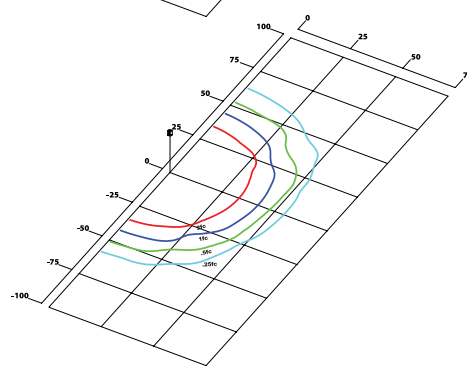
Grid in MH
MH=25 Feet



K45F256U5KC

Type V

Grid in MH
MH=25 Feet



Photometric Performance

					5000 CCT 80 CRI					4000 CCT 80 CRI				
LED Board Watts	Drive Current (mA)	Input Watts	Optics		Lumens	LPW	B	U	G	Lumens	LPW	B	U	G
EasyLED 167w	525	177	A	Type I	20,821	116	4	0	3	19,416	109	4	0	2
			B	Type II	19,863	111	3	0	3	18,522	104	3	0	2
			C	Type III	21,820	122	3	0	3	20,347	114	3	0	3
			D	Type IV	22,118	124	3	1	4	20,625	115	3	1	4
			F	Type V	20,814	116	4	0	1	19,409	109	4	0	1
EasyLED 256w	525	281	A	Type I	31,918	116	5	0	3	29,763	108	5	0	3
			B	Type II	30,449	111	3	0	3	28,393	103	3	0	3
			C	Type III	33,449	122	4	0	4	31,191	114	4	0	4
			D	Type IV	27,600	101	3	0	4	25,737	94	3	0	4
			F	Type V	31,907	116	5	0	2	29,753	108	5	0	2

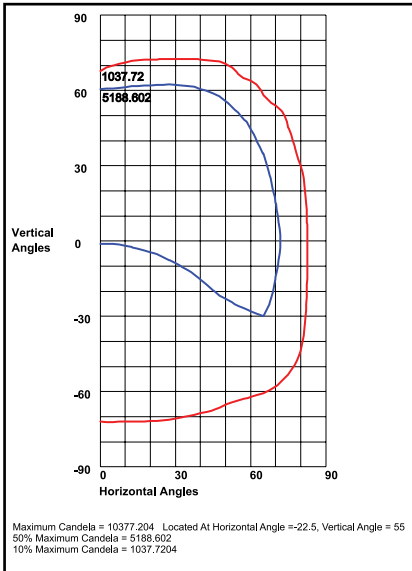


K45

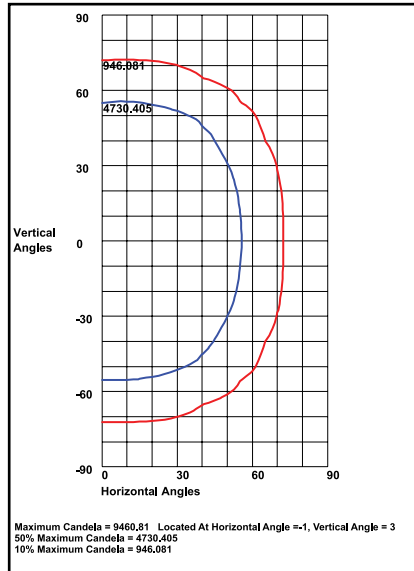
L70
25°C**290,000 Hours**

EasyLED Large Bentley Kitty Hawk Area, Wall, and Flood Light

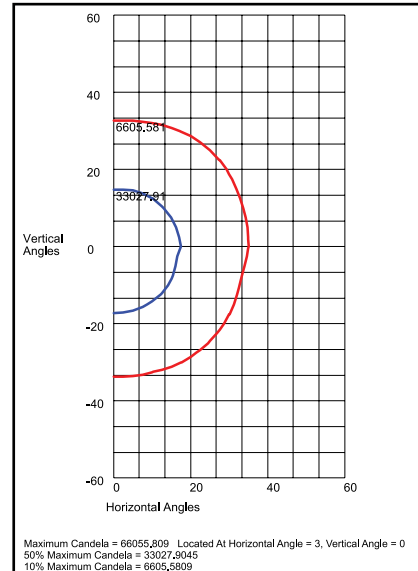
Photometric Data



K45C256U5KC
120°H x 70°V, NEMA 7H x 7V



K45F256U5KC
115°H x 110°V, NEMA 7H x 7V



K45I256U5KC
30°H x 30°V, NEMA 4H x 4V

Photometric Performance

LED Board Watts	Drive Current (mA)	Input Watts	Beam	5000 CCT 80 CRI		4000 CCT 80 CRI	
				Lumens	LPW	Lumens	LPW
EasyLED 167w	525	177	A 130°H x 70°V, NEMA 7H x 5V	20,807	116	19,403	109
			B 110°H x 30°V, NEMA 7H x 6V	19,889	111	18,547	104
			C 120°H x 70°V, NEMA 7H x 7V	21,664	121	20,201	113
			D 110°H x 30°V, NEMA 6H x 5V	21,875	122	20,399	114
			F 115°H x 110°V, NEMA 7H x 7V	20,867	117	19,459	109
			I 30°H x 30°V, NEMA 4H x 4V	20,409	115	-	-
EasyLED 256w	525	281	A 130°H x 70°V, NEMA 7H x 5V	31,896	116	29,743	108
			B 110°H x 30°V, NEMA 7H x 6V	30,489	111	28,431	104
			C 120°H x 70°V, NEMA 7H x 7V	33,209	121	30,968	113
			D 110°H x 50°V, NEMA 7H x 6V	27,299	99	25,456	93
			F 115°H x 110°V, NEMA 7H x 7V	31,988	116	29,829	109
			I 30°H x 30°V, NEMA 4H x 4V	31,286	111	-	-

Projected Lumen Maintenance

Data shown for 5000 CCT			Compare to MH			
TM-21-11	Input Watts	Initial	25,000 Hrs	50,000 Hrs	100,000 Hrs	Calculated L70@ 25°C
L70 Lumen Maintenance @ 25°C / 77°F	177	1.00	0.98	0.96	0.92	393,000
L70 Lumen Maintenance @ 25°C / 77°F	281	1.00	0.97	0.95	0.90	290,000
TM-21-11	Input Watts	Initial	25,000 Hrs	50,000 Hrs	100,000 Hrs	Calculated L70@ 50°C
L70 Lumen Maintenance @ 50°C / 122°F	177	1.00	0.96	0.91	0.82	114,000
L70 Lumen Maintenance @ 50°C / 122°F	281	1.00	0.94	0.88	0.76	84,000
TM-21-11	Input Watts	Initial	25,000 Hrs	50,000 Hrs	100,000 Hrs	Calculated L80@ 40°C
L80 Lumen Maintenance @ 40°C / 104°F	177	1.00	0.97	0.94	0.89	180,000
L80 Lumen Maintenance @ 40°C / 104°F	281	1.00	0.95	0.91	0.81	108,000

NOTES:

- Projected per IESNA TM-21-11. Data references the extrapolated performance projections for the 525mA base model in a 25°C ambient, based on 10,000 hours of LED testing per IESNA LM-80-08.
- Compare to MH box indicates suggested Light Loss Factor (LLF) to be used when comparing to Metal Halide (MH) systems.