



**Wall Pack - W2 Series  
26 - 84W Compact Fluorescent**



Job Name: \_\_\_\_\_

Type: \_\_\_\_\_

Catalog Number: \_\_\_\_\_

**Applications:** Suitable for entry ways, parking areas, walkways, perimeter, security and area lighting. Wall mount to a height of 12'-20' with typical spacing of 2-3 mounting heights. Compact Fluorescent provides white light, energy savings and long life. Dimensions: Height: 9", Width: 14-1/4", Extends from Wall: 7-1/4"

Catalog Number	Description	Volts	Total Watts	Lamp Life	Lamp Lumens	Lamp Base	Max Amps 120/208/240/277	Ballast Type
W2F26	26W CFL, Multi Tap	Universal	29	12,000	1,800	GX24q-3	.24 / .15 / .12 / .11	Electronic
W2F32	32W CFL, Multi Tap	Universal	36	12,000	2,400	GX24q-3	.31 / .21 / .17 / .13	Electronic
W2F42	42W CFL, Multi Tap	Universal	46	12,000	3,200	GX24q-4	.38 / .25 / .21 / .17	Electronic
W2F52	2x26W CFL, Multi Tap	Universal	55	12,000	3,600	GX24q-3	.46 / .29 / .25 / .21	Electronic
W2F64	2x32W CFL, Multi Tap	Universal	68	12,000	4,800	GX24q-3	.57 / .35 / .30 / .25	Electronic
W2F84	2x42W CFL, Multi Tap	Universal	93	12,000	6,400	GX24q-4	.78 / .47 / .40 / .33	Electronic

**Specifications:**

**Housing and Door:** Heavy duty die cast aluminum with cast in drilling template for easy mounting to junction box. Additional (4) 1/2" NPS supply entry points are sealed with gasketed close up plugs.

**Lens:** Molded prismatic heat and thermal shock resistant borosilicate glass. Prismatic grooves provide even illumination.

**Gasket:** Housing and door are sealed with a high temperature silicone gasket which seals out moisture and dirt.

**Reflector:** Heavy gauge anodized pebbled aluminum.

**Socket:** Molded thermoplastic;  
26W - 32W: 4-pin type, GX24q-3 Base  
42W: 4-pin type, GX24q-4 Base

**Ballast:** Electronic High Power Factor (>.98)  
Programmed Rapid Start, THD < 10%  
Universal voltage, 120 through 277V 50/60Hz  
Minimum starting temperature 0°F (-18° C)  
End of lamp life shutdown protection

**Lamp:** Energy efficient Compact Fluorescent, included  
26W - 32W: 4-pin type, GX24q-3 Base  
42W: 4-pin type, GX24q-4 Base

**Hardware:** All hardware inside and outside the luminaire is nickel plated stainless steel.

**Finish:** Architectural Bronze. A nine step process of cleaning and treating the aluminum prepares it for powder coating. A durable polyester powder coat finish is then applied ensuring a long lasting finish.

**Photocell:** Specify **PC1** for 120V and **PC2** for 208-277V. Field Installed.

**Approvals:** CSA (c & us) Listed. Suitable for Wet Locations

Note: 1- Specifications may change without notice.  
2. Lamp Life and Lumens listed are initial values and are affected by lamp orientation and operating conditions.

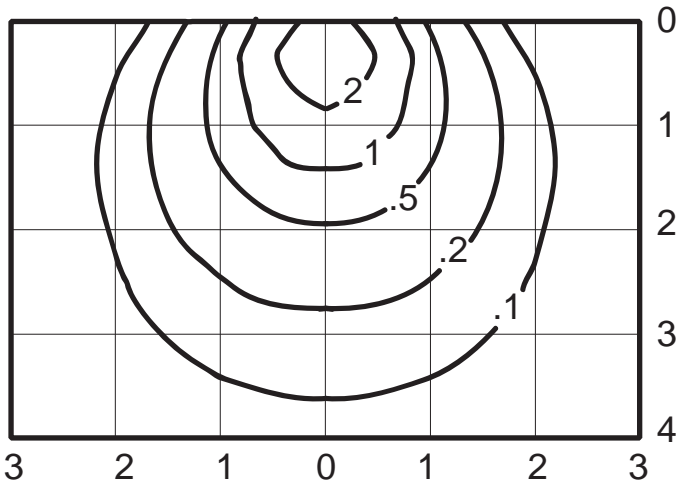


**Wall Pack - W2 Series  
26 - 84W Compact Fluorescent**

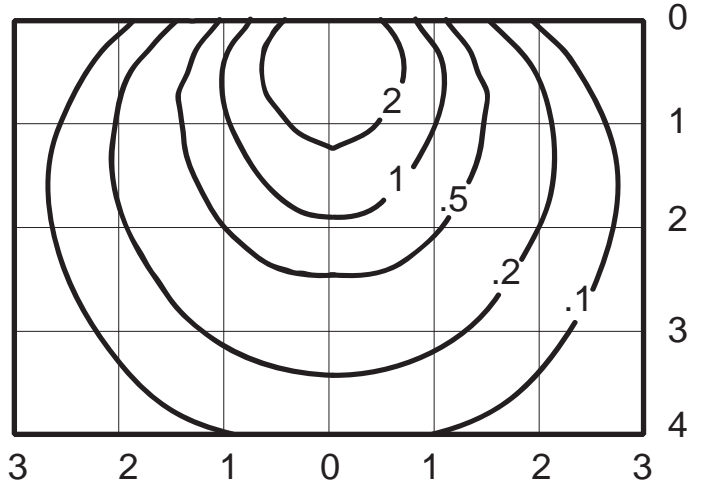


The chart is based on a W2 mounted 10' above the ground. Each iso-line represents the footcandle level along the path. Each square represents the mounting height. To change the height of the fixture or to change the wattage use the multipliers below.

W1F42 - 42W Compact Fluorescent



W1F84 - 84W Compact Fluorescent



Mounting Height	Multiplier	Watts	Multiplier
8'	1.56	26	.56
10'	1	32	.75
12'	.69	42	1
14'	.51		
16'	.39		

Mounting Height	Multiplier	Watts	Multiplier
8'	1.56	52	.56
10'	1	64	.75
12'	.69	84	1
14'	.51		
16'	.39		