



Wall Pack - W45 Cutoff Series
250 - 400W Pulse Start Metal Halide (MH)
250 - 400W High Pressure Sodium (HPS)



Job Name: _____

Type: _____

Catalog Number: _____

Applications: Suitable for entry ways, parking areas, walkways, perimeter, security and area lighting. Wall mount to a height of 15'-25' with typical spacing of 2-3 mounting heights. Metal Halide provides a crisp white light while High Pressure Sodium provides a golden yellow light. Dimensions: Height: 9", Width: 18-1/8", Extends from Wall: 13-3/8"

Catalog Number	Description	Volts	Total Watts	Lamp Life	Lamp Lumens	Lamp Type	Max Amps 120/208/240/277	Ballast Type	ANSI Code
W45M250QT	250W MH, Quad Tap	QT	284	15,000	21,300	ED28	2.4 / 1.4 / 1.2 / 1.1	CWA-HPF	M138, M153
W45M320QT	320W MH, Quad Tap	QT	363	20,000	30,000	ED28	3.1 / 1.8 / 1.6 / 1.4	CWA-HPF	M132, M154
W45M350QT	350W MH, Quad Tap	QT	397	20,000	33,000	ED28	3.5 / 2 / 1.8 / 1.5	CWA-HPF	M131
W45M400QT	400W MH, Quad Tap	QT	454	20,000	38,000	ED28	4 / 2.3 / 2 / 1.7	CWA-HPF	M135, M155
W45H250QT	250W HPS, Quad Tap	QT	295	24,000	27,000	ED18	2.5 / 1.5 / 1.3 / 1.1	CWA-HPF	S50
W45H400QT	400W HPS, Quad Tap	QT	460	24,000	50,000	ED18	3.8 / 2.2 / 1.9 / 1.7	CWA-HPF	S51

Specifications:

Housing and Door: Heavy duty die cast aluminum housing and door. Door hinges and swings open for easy maintenance. Three 1/2" NPS supply entry points are sealed with gasketed close up plugs.

Lens: Impact and thermal shock resistant clear soda lime glass.

Gasket: Housing and door are sealed with a high temperature silicone gasket which seals out moisture and dirt.

Reflector: Heavy gauge pebbled anodized aluminum.

Socket: Porcelain Mogul base, E39, 5KV pulse rated with nickel plated screw shell.

Ballasts: Magnetic, Core and Coil CWA construction. Quad Tap (QT) - 120/208/240/277V High Power Factor.

Lamp: Energy efficient HPS or Pulse Start Metal Halide, included.

Hardware: All hardware inside and outside the luminaire is nickel plated stainless steel.

Finish: Architectural Bronze. A nine step process of cleaning and treating the aluminum prepares it for powder coating. A durable polyester powder coat finish is then applied ensuring a long lasting finish.

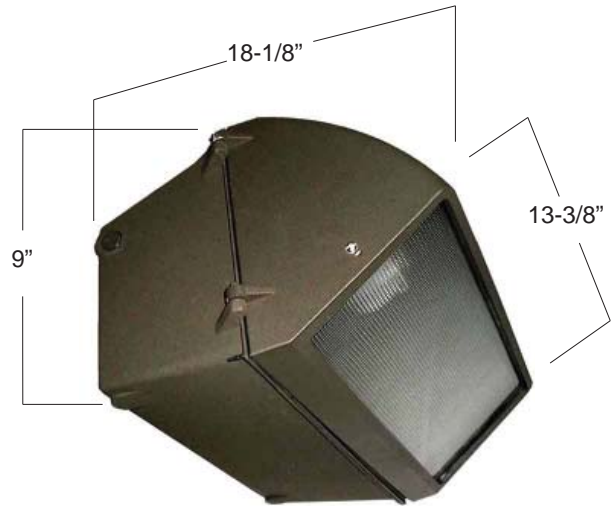
Photocell: Specify **PC1** for 120V and **PC2** for 208-277V. Field Installed.

Approvals: CSA (c & us) Listed. Suitable for Wet Locations

Note: 1- Specifications may change without notice.
 2. Lamp Life and Lumens listed are initial values and are affected by lamp orientation and operating conditions.



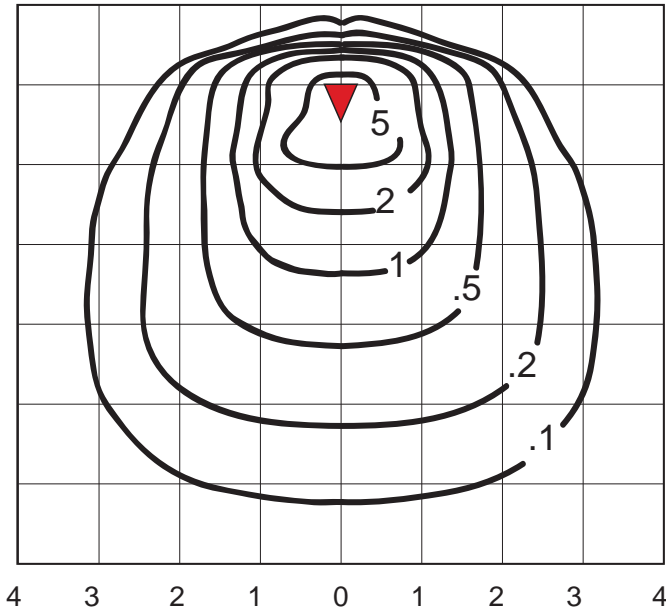
Wall Pack - W45 Series
250 - 400W Pulse Start Metal Halide (MH)
250 - 400W High Pressure Sodium (HPS)



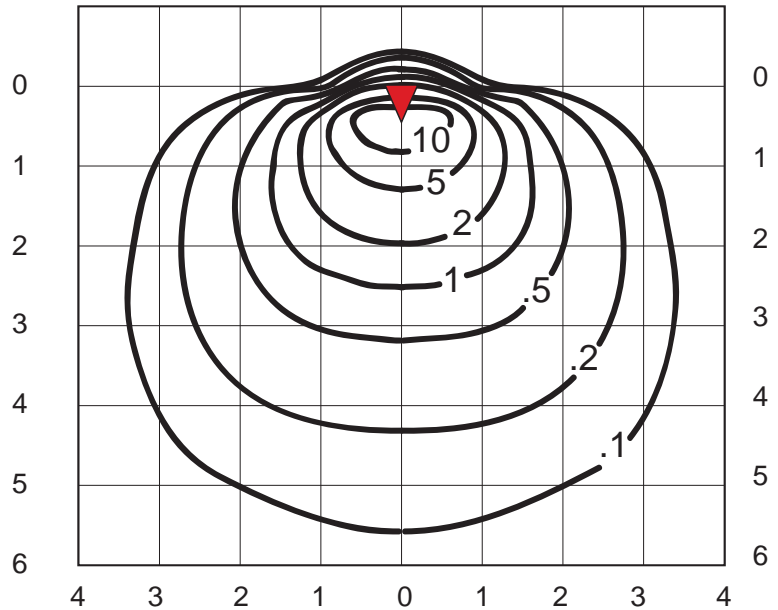
The chart is based on a W45 mounted 20' above the ground. Each iso-line represents the footcandle level along the path. Each square represents the mounting height. To change the height of the fixture or to change the wattage use the multipliers below.

The chart is based on a W45 mounted 20' above the ground. Each iso-line represents the footcandle level along the path. Each square represents the mounting height. To change the height of the fixture or to change the wattage use the multipliers below.

W45M400 - 400W MH



W45H400 - 400W HPS



Mounting Height	Multiplier
15'	1.78
18'	1.23
20'	.1
25'	.64

Watts	Multiplier
250 MH	.56
320 MH	.78
350 MH	.87
400 MH	1

Mounting Height	Multiplier
15'	1.78
18'	1.23
20'	.1
25'	.64

Watts	Multiplier
250 HPS	.54
400 HPS	1